

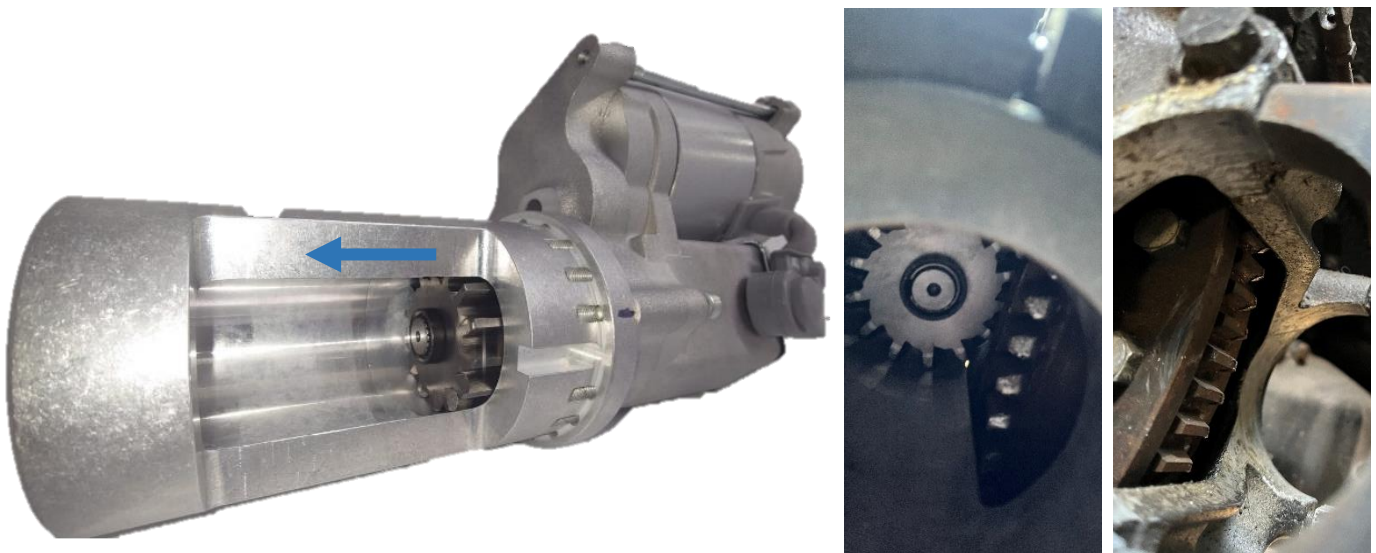
Starter Motor - S1 & Cloud I (1957-1965)(RD8399P)

Rolls Royce Cloud 1 and Bentley S1 models received two different flywheel / ring gear set-ups.

One of which was referred to as having a 'seperate ring gear'. On this model the UE1721 flywheel blocked the ring gear teeth on engine side.



The original starter fitted to the vehicle pulls its bendix into the ring gear from the gearbox side therefore is obviously unaffected.



This starter motor engages its pinion into the engine side of the flywheel meaning it is not compatible with engines that have the UE1721 flywheel.

Unfortunately, for these models we are currently unable to provide a solution.