

Flying Spares

BENTLEY HEAD UNIT REPLACEMENT KIT – INSTALLATION MANUAL (INFOTAINMENTINS)



***DO NOT ATTEMPT TO FIT THIS UNIT
UNTIL YOU HAVE READ THE
INSTALLATION MANUAL***

OVERVIEW

The Bentley Head Unit Replacement Kit allows you to install any (double din) aftermarket head unit into Bentley GT / GTC / SPUR 2004-2011. Everything you need to install the aftermarket head unit is contained within this kit.

KIT CONTENTS



Main Unit



L-Brackets



Power harness



Audio Harness



Acc power harness



Fixings



Antenna Booster



Audio isolator

TOOLS REQUIRED



Torx T20



Trim Remover



Removal Keys A



Removal Keys B



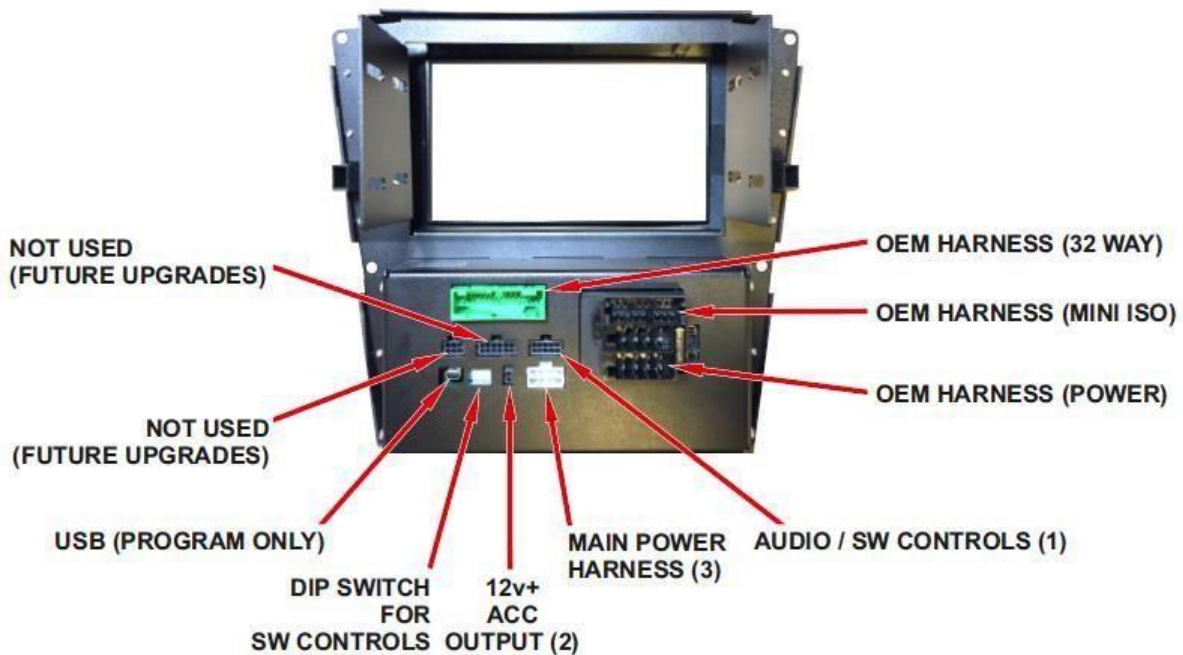
Right angle pick

INSTALLATION

IMPORTANT NOTE:

The original Navigation, CD changer and the Telephone kit must be disconnected (details shown in the following pages).

REAR OF MAIN UNIT



AUDIO / SW CONTROLS (1)

PIN	COLOUR	FUNCTION
1	WHITE 3.5mm JACK	STEERING WHEEL (Signal)
2	BLACK 3.5mm JACK	STEERING WHEEL (Shield)
4	WHITE	AUDIO SIGNAL (L)
5	RED	AUDIO SIGNAL (R)
6	BLUE	STEERING WHEEL (Signal)
9	BLACK	AUDIO GND
10	BLACK	AUDIO GND

NOTE:
Both the 3.5mm jack plug and the BLUE wire are used for steering wheel remote. Please see page 4 for usage.

12v+ ACC OUTPUT (2)

PIN	COLOUR	FUNCTION
1	RED	12v+ ACC (OUT)
2	BLACK	GND

NOTE:
12v+ ACC (OUT)
MAX CURRENT DRAW 1AMP
(ideal for powering after market rear camera)

MAIN POWER HARNESS (3)

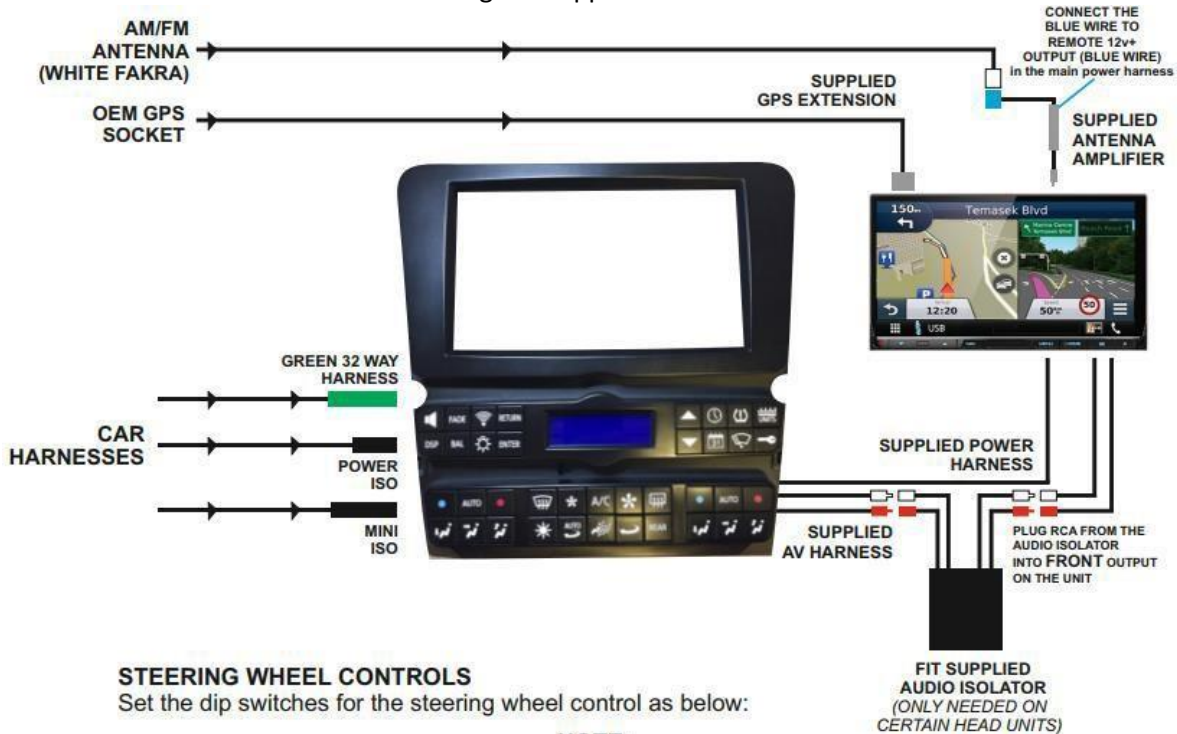
PIN	COLOUR	FUNCTION
1	YELLOW	12v+ PERM
2	ORANGE	ILLUMINATION (OUT)
3	PURPLE/WHITE	REVERSE 12v+ (OUT)
4	BLUE	REMOTE 12v+ (OUT)
5	BLACK	GND
6	GREEN	Park Brake (OUT)
7	RED	12v+ ACC
8	PINK	SPEED PULSE (VSS)

CONNECTIONS

IMPORTANT NOTE:

After all the connections are made and the Bentley Head Unit Replacement is powered up, remove the key ensuring all doors, boot and bonnet are closed. Also ensure the lights are off. Lock the car wait until the cluster goes to sleep and allow an extra minute for the CAN to go to sleep. Now unlock as normal and the Bentley Head Unit Replacement panel is now ready to use.

Plug in all the connections from the Bentley Head Unit Replacement to your aftermarket head unit using the supplied harnesses.



STEERING WHEEL CONTROLS

Set the dip switches for the steering wheel control as below:

NOTE:

The 3.5mm jack labelled steering wheel control is for ALPINE, PIONEER and JVC units. The BLUE WIRE labelled Steering wheel control in the AUDIO / SW CONTROLS harness is for KENWOOD units.

STEERING WHEEL CONTROLS

Set the dip switches for the steering wheel control as below:



NOTE:

Please ensure accurate line-up of the after market head unit into fascia using supplied L-brackets and screws (as certain models have motorised front panels)



**Take trim
remover and
pry the
speaker grill
up and
remove**



**Take hold of
the trim panel
and pull from
the top and
the bottom to
remove**



**Lift trim
panel and
disconnect
the black
connector**

**Remove
the 5
screws
(t20 torx)
as
shown in
photo**





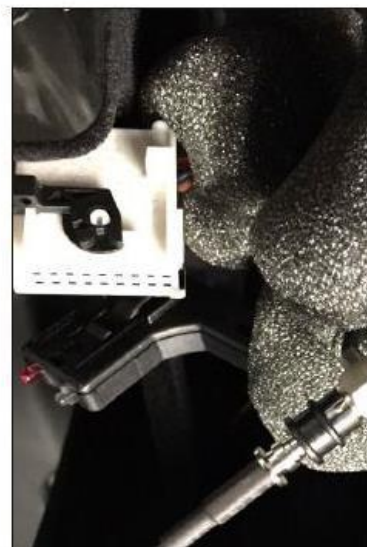
**Carefully
remove the
Bentley head
unit**



**Disconnect
all
connections
to factory
radio and
remove from
car.**



**Disconnect
the
Navigation
CD drive in
the glovebox.**

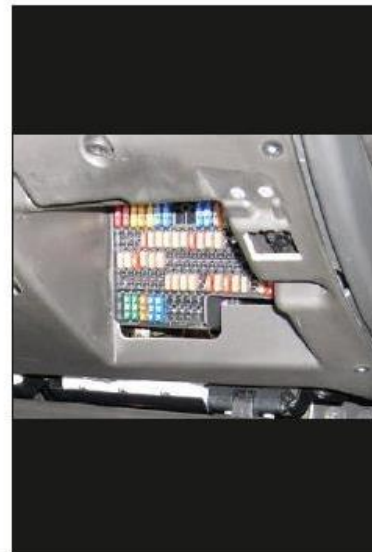




**Disconnect
the CD
Changer in
the glovebox.**



**Remove the fuse
for the phone
module. Locate
the fuse board in
the driver side
foot well**



**Remove the 5 amp
fuse in location 28
for the phone
module**





Remove the navigation drive and the CD changer to make it easier to run the supplied GPS extension lead.



Connect the supplied GPS extension lead to the OEM GPS socket behind the CD navigation drive

AM/FM radio connections



Fibre optic connector

Cable assembly





Remove the 4 x trim clip from original ZAB unit and clip into the supplied fascia



For the after market microphone and possible DAB antenna (GT / SPUR) remove the A pillar trim

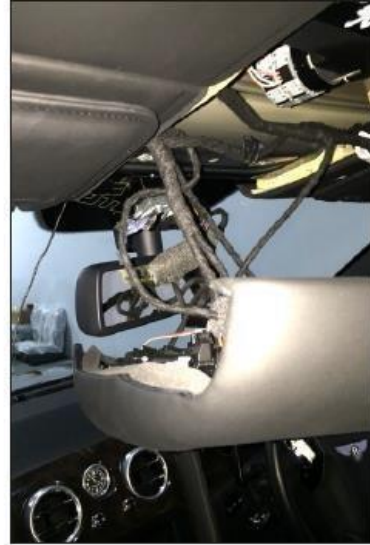


Pry back trim next to door seal and use a feeder cable to get through to the glove box

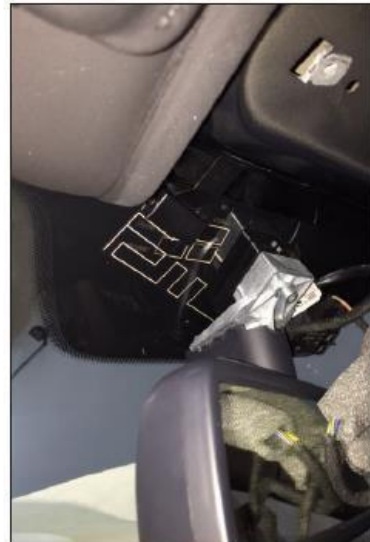




To remove the roof console you will require a right angled pick. Gently pry the OEM mic and alarm sensor out of the consol and remove the 2 x t20 torx screws behind, then pull down console.



On GT / SPUR there are only certain locations where you can put the DAB antenna as the glass in the car is polarised and will affect reception. Top of the front screen is not polarised.





Once you have completed all the above, refit the trim panel and test to ensure all functions.

OPERATION

For full details on the operation of the Bentley Head Unit Replacement Kit fascia panel, please consult the USER GUIDE.

TROUBLESHOOTING

Q. Steering wheel controls don't work.

A. Please check the dip switches are set correctly for your chosen head unit.

Q. The Bentley Head Unit Replacement panel is not functioning correctly after initial install.

A. Please see "important note" on page 4.

Q. No GPS reception on aftermarket unit.

A. Check connection of the GPS extension lead (supplied in the kit).

Q. The LCD screen keeps turning off.

A. Check to see if the LCD delay is turned on.

Q. Unwanted noise at low level.

A. Please check if the audio isolator has been fitted (certain units may need this).

Q. The AM / FM is very poor.

A. Check that the antenna amplifier is fitted correctly to the WHITE Fakra plug and there is 12v+ on the blue wire going to the antenna amplifier.

Q. Where will I find the fuse for the Bentley Head Unit Replacement in the car.

A. Main fusebox under the driver side foot well FUSE 17 & 18 (10 amp)

Q. Can I retain the OEM reverse camera.

A. Yes, you will require an optional part Bentley Head Unit Replacement -OEMCAM (available from end Jan 2017)

For technical support please call +44 (0) 333 700 1515
***Please ensure you have followed the install manual
before calling***

NOTE:

After the Bentley Head Unit Replacement panel has been fitted, and due to the fact that certain components have been disconnected, it will cause a fault code to be generated on the ODIS or VAGCOM diagnostic software systems.

Please ignore fault codes relating to (J523) / (J401) / (J412)