



FITTING INSTRUCTIONS FOR THE INNER ROUND HEADLAMP KIT (UD70823KIT)

This UD70823KIT replaces the original individual inner lights units which were supplied as part number UD70822 that used a single filament H1 55W bulb and were designed to operate either when main beam only was initiated, or the fog light switch was used.

The UD70822 are now no longer available so we have made available an alternative that requires both inner headlight units to be replaced at the same time with this kit.

It is recommended that this kit be fitted/installed by a qualified automotive electrician.

Fitting is as follows:

Step 1: Isolate the battery.

Step 2: Refer to the factory TSD4701 manual for removal of the inner light units.

Step 3: Once the inner light units have been removed from the car there will be 2 wires that attach to the rear of the original light unit single filament bulb and bulb holder, these wires are the ground/earth (-) wire and the bulb power (+) wire, see Fig.1.

Step 4: The UD70823KIT contains 2 light units (UD70823P), 2 bulbs and 2 connectors blocks (H4PIGTAIL).

Step 5: The bulbs supplied in the kit have 3 pins, the connector blocks in the kit also have 3 wires, see Fig 2. the new connector block only requires 2 wires to be used, the blue one which is the ground/earth and the red, which is the bulb power feed, the yellow wire is redundant and will need be isolated.

Step 6: The original ground wire (-) as in Fig 1. needs to be correctly spliced into the blue wire on the new connector, see Fig 2. and the original bulb power feed wire (+) as in Fig 1. will need to be correctly spliced into the red wire on the new connector, see Fig 2.

Step 7: Once the wires have been correctly joined together and the joins have been correctly insulated then reconnect the battery and plug the new light units with the bulbs installed to the new connectors and test them to make sure they only illuminate when the main beam and/or fog light switch is operated.

Step 8: Once the lights have been tested and do illuminate correctly with either main beam and/or fog lights being switched on then finish fitting the new light units to the car.

Fig 1. Original light unit connection.

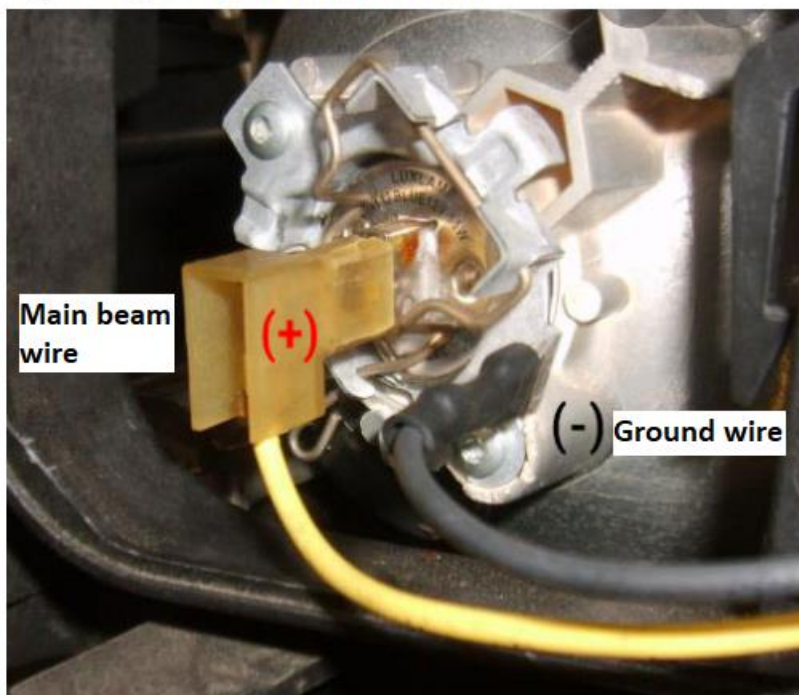


Fig 2. New connector block wiring in kit UD70823KIT

Ground (earth) wire

